

# Jonathan Hunt

ESTATE AGENCY

20 High Street Ware SG12 9BX

Tel: 01920 411090

8 High Street Buntingford SG9 9AG

Tel: 01763 272727

info@jonathan-hunt.co.uk

www.jonathanhunt.co.uk



Jonathan

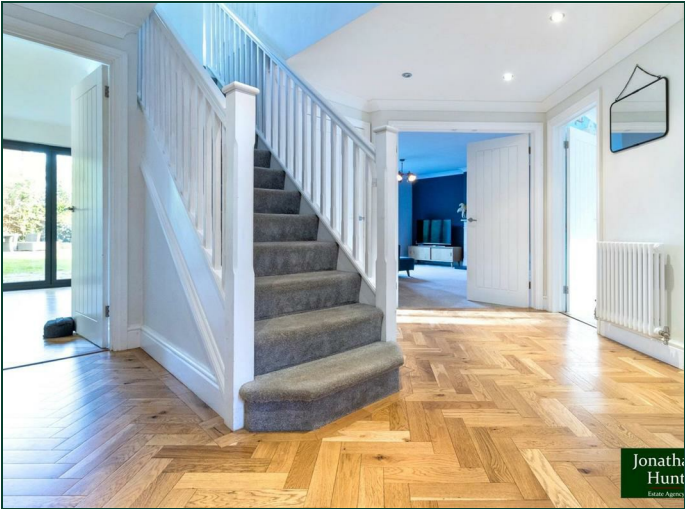
Police House Brook End, Cottered, Buntingford, Hertfordshire, SG9 9QR

Asking Price £862,000

# Police House Brook End, Cottered, Buntingford, Hertfordshire, SG9 9QR

## Available Chain Free

A spacious and beautifully presented four-bedroom detached home of approximately 2,250 sq ft, located in the sought-after village of Cottered, just outside Buntingford. Positioned on a quiet no-through road, this thoughtfully remodelled property offers flexible and well-balanced accommodation ideal for modern family living. The ground floor features a generous entrance hall with cloakroom, a versatile study/playroom, and a bright, welcoming lounge with double doors opening to the garden. A large, recently fitted open-plan kitchen/dining area forms the heart of the home, complete with integrated appliances, a central island, and adjoining utility room. Upstairs, the principal bedroom benefits from a stylish en suite and dressing area, complemented by two further double bedrooms with built-in wardrobes, a single bedroom, a separate study, and a contemporary family bathroom with bath and separate shower. Outside, the home enjoys a well-maintained rear garden with lawn, patio, and seating area, along with a large private driveway and garage. Recent updates include new flooring, redecorated interiors, and double glazing throughout. Cottered offers a village green, pub, and access to countryside walks, with excellent road links and Baldock station providing direct rail access to London in around 40 minutes — making this an ideal choice for those seeking a peaceful setting with commuting convenience.



**ENTRANCE HALL**

**LOUNGE 16'7" x 13'7" (5.08 x 4.15)**

**RECEPTION ROOM 15'1" x 9'8" (4.62 x 2.96)**

**CLOAKROOM**

**KITCHEN DINER 23'11" x 18'8" (7.29 x 5.69)**

**UTILITY ROOM 8'7" x 5'4" (2.62 x 1.63)**

**FIRST FLOOR LANDING**

**PRINCIPAL BEDROOM 16'5" x 12'9" (5.01 x 3.89)**

**WALK IN WARDROBE 11'10" x 9'10" (3.62 x 3.0)**

**EN-SUITE 8'9" x 7'10" (2.67 x 2.4)**

**BEDROOM TWO 11'7" x 10'2" (3.54 x 3.11)**

**BEDROOM THREE 11'8" x 9'4" (3.58 x 2.87)**

**BEDROOM FOUR 8'7" x 7'7" (2.64 x 2.33)**

**STUDY 6'4" x 5'3" (1.94 x 1.61)**

**FAMILY BATHROOM 8'3" x 5'8" (2.53 x 1.73)**



Jonathan  
Hunt  
Estate Agency



Jonathan  
Hunt  
Estate Agency

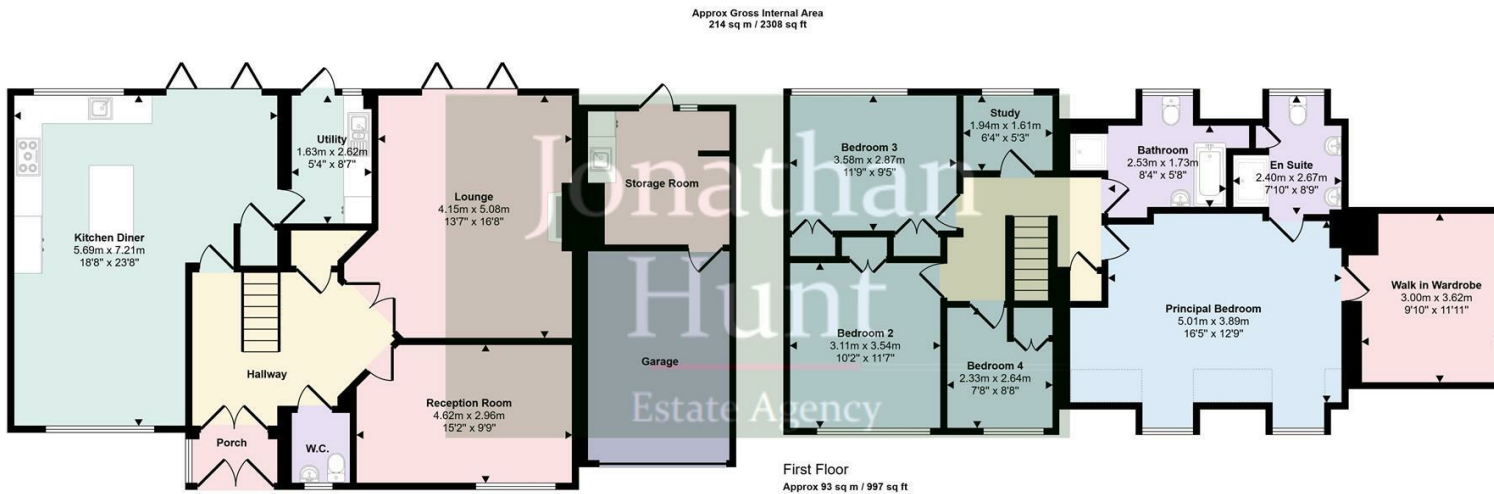


Jonathan  
Hunt  
Estate Agency



Jonathan  
Hunt  
Estate Agency





Ground Floor  
Approx 122 sq m / 1311 sq ft

Denotes head height below 1.5m

This floorplan is only for illustrative purposes and is not to scale. Measurements of rooms, doors, windows, and any items are approximate and no responsibility is taken for any error, omission or mis-statement. Icons of items such as bathroom suites are representations only and may not look like the real items. Made with Made Snappy 360.

